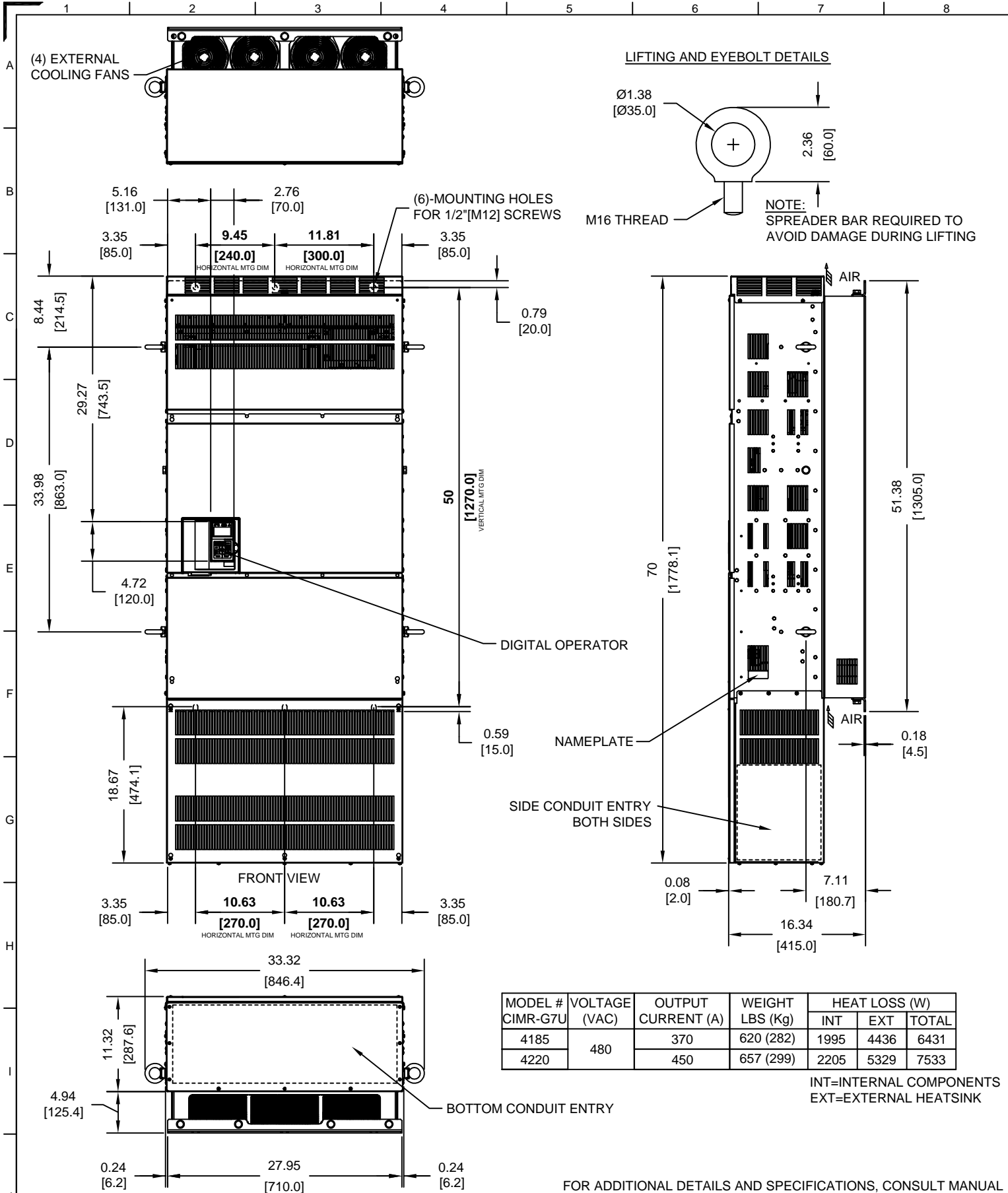
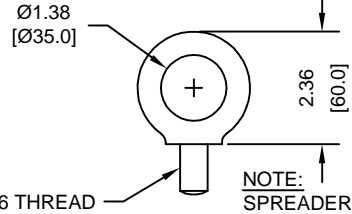


(4) EXTERNAL COOLING FANS

LIFTING AND EYEBOLT DETAILS



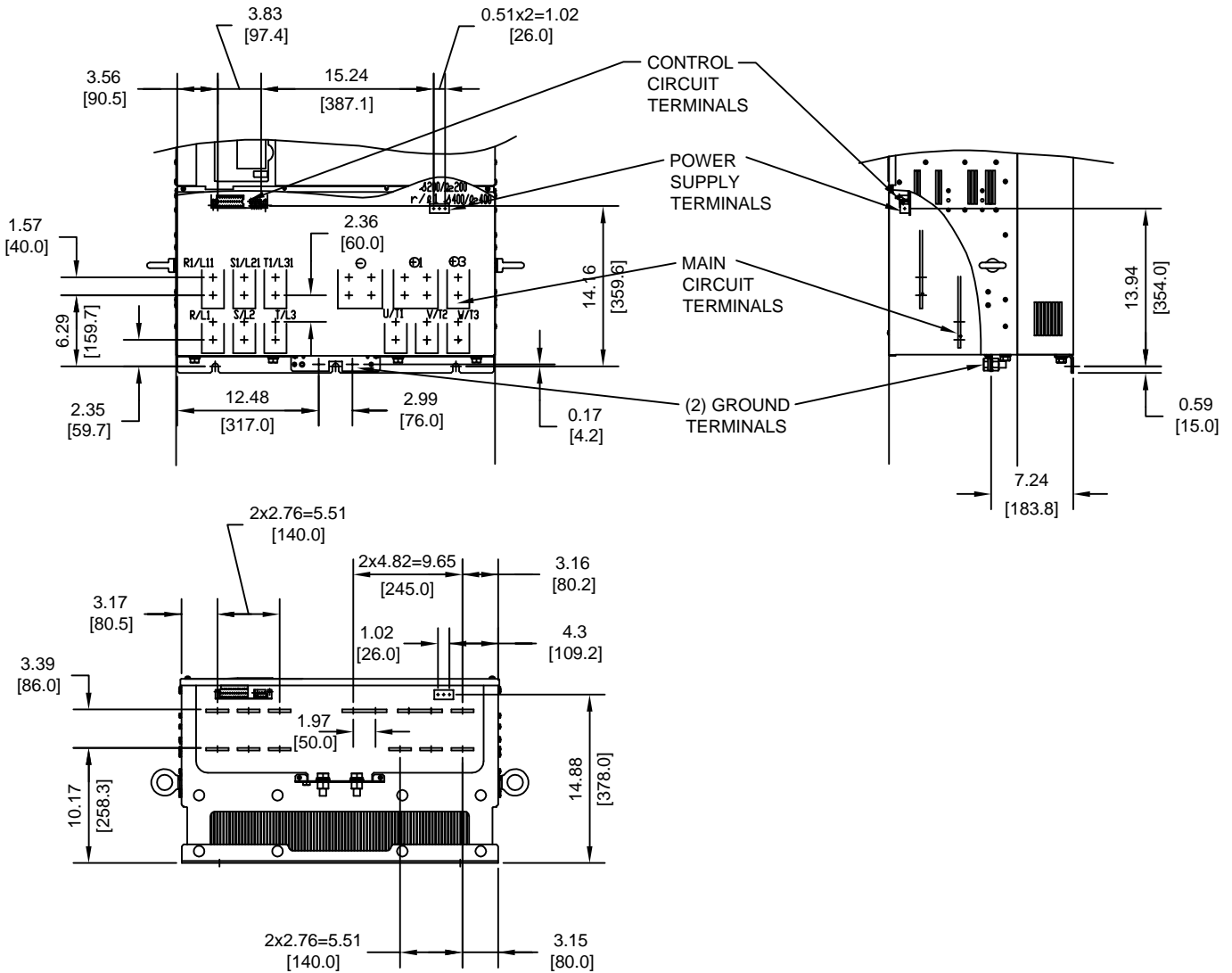
MODEL #	VOLTAGE (VAC)	OUTPUT CURRENT (A)	WEIGHT LBS (Kg)	HEAT LOSS (W)		
				INT	EXT	TOTAL
4185	480	370	620 (282)	1995	4436	6431
4220		450	657 (299)	2205	5329	7533

INT=INTERNAL COMPONENTS
EXT=EXTERNAL HEATSINK

FOR ADDITIONAL DETAILS AND SPECIFICATIONS, CONSULT MANUAL

TOLERANCES/REFERENCES: UNITS: IN[mm] SCALE: 1:15	<p>YASKAWA A World of Automation Solutions™</p> <p>YASKAWA ELECTRIC AMERICA, INC. Corporate Headquarters 2121 Norman Drive South Waukegan, IL 60085 1-800-YASKAWA http://www.yaskawa.com</p>	DRAWN: J. MATTAS CHECKED: J. MATTAS TECH: J. CAIRO APPROVED: T. SASADA ORIGINAL DESIGN:	DATE: 5-21-08 DATE: 7-25-08 DATE: 8-1-08 DATE: 8-8-08 DATE:	TITLE: G7 DIMENSION DRAWING FRAME SIZE 14 NEMA TYPE 1/IP20 ENCLOSURE G7U4185, 4220 SIZE: A REVISION: R00 PAGE: 1 of 3 DRAWING #: DD.G7.FR14.N1.01
--	---	---	---	--

TERMINAL AND WIRING DETAILS (SCALE 1:15)




TERMINAL AND WIRE SPECIFICATIONS FOR MAIN CIRCUIT AND GROUND

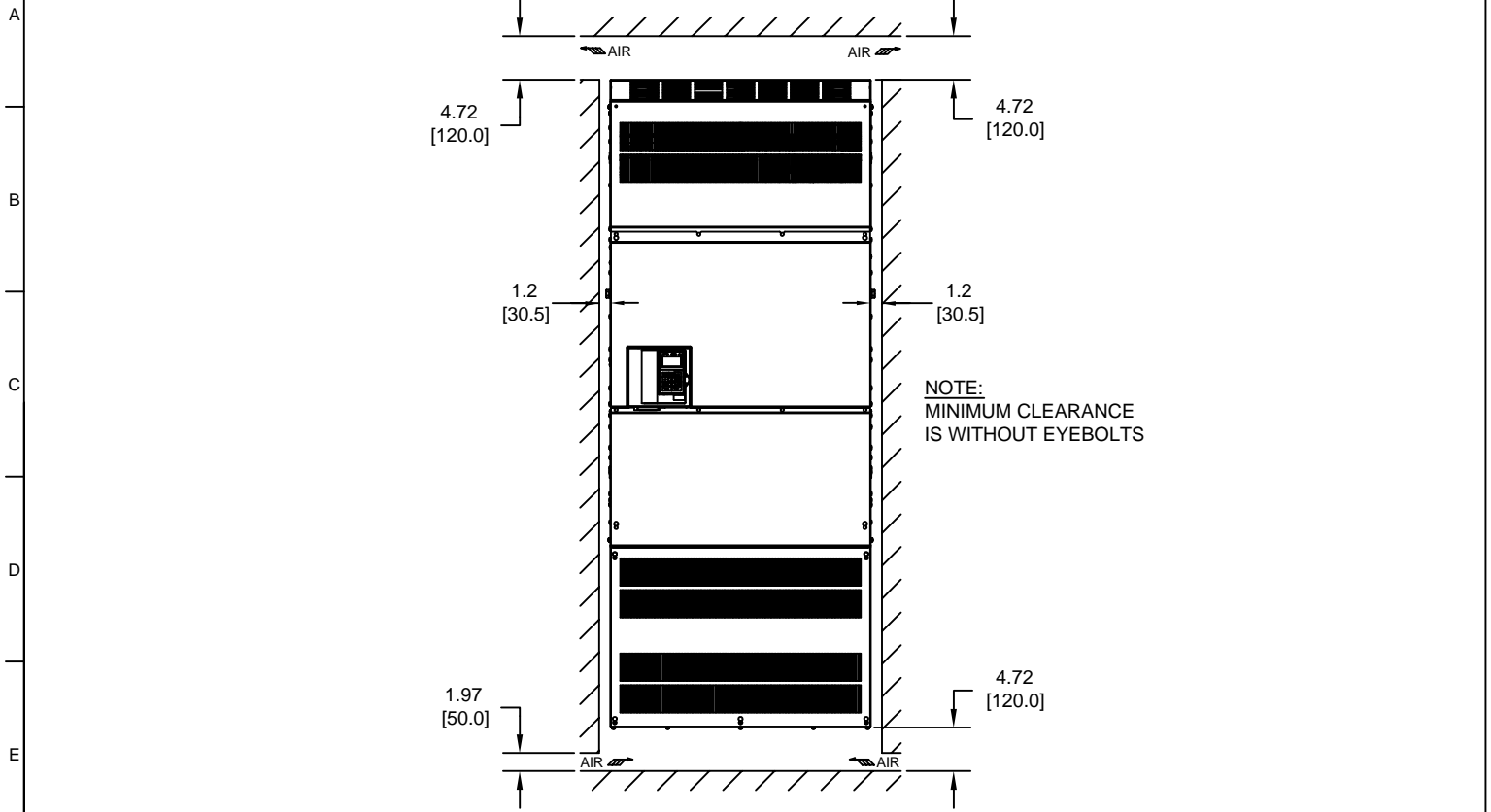
MODEL # CIMR-G7U	TERMINAL SYMBOL	TERMINAL SCREW	CLAMPING TORQUE lb.in.(N.m.)
4185	R/L1, S/L2, T/L3, ⊙, ⊕1, ⊕2, ⊕3, U/T1, V/T2, W/T3, R1/L11, S1/L21, T1/L31	M16	694 TO 867 (78.4 TO 98.0)
	r/1, s200/2200, s400/2400	M4	11.4 TO 12.3 (1.3 TO 1.4)
4220	R/L1, S/L2, T/L3, ⊙, ⊕1, ⊕2, ⊕3, U/T1, V/T2, W/T3, R1/L11, S1/L21, T1/L31	M16	694 TO 867 (78.4 TO 98.0)
	r/1, s200/2200, s400/2400	M4	11.4 TO 12.3 (1.3 TO 1.4)

NOTE: REFER TO APPLICABLE CODES FOR PROPER WIRE TYPE AND SIZE

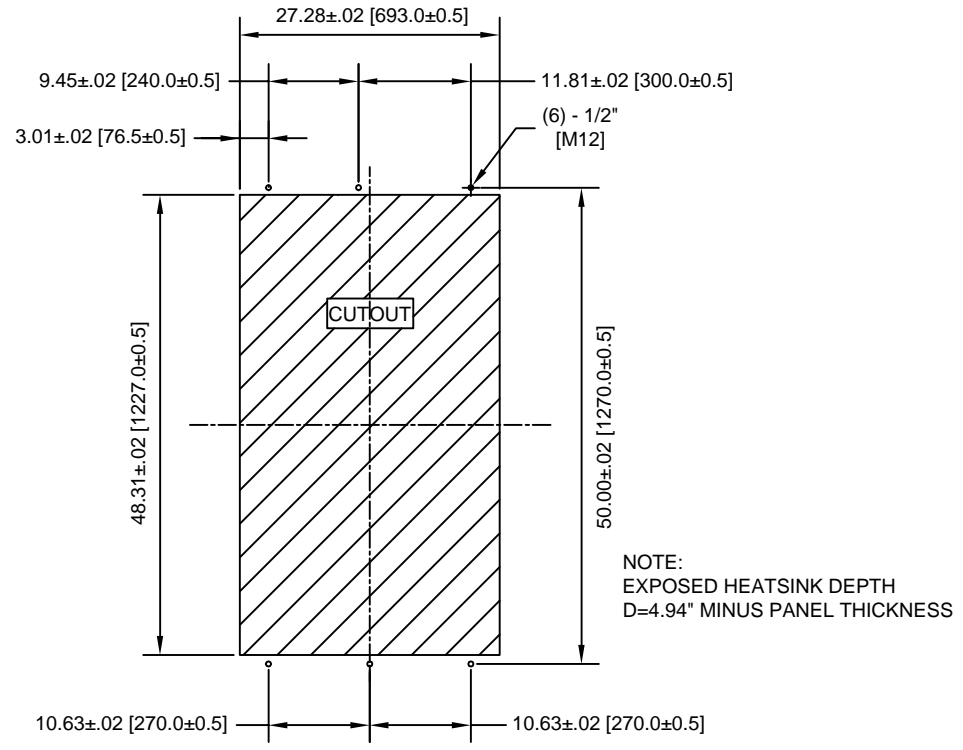
FOR ADDITIONAL DETAILS AND SPECIFICATIONS, CONSULT MANUAL

TOLERANCES/REFERENCES: - - - - -	 YASKAWA <i>A World of Automation Solutions™</i> YASKAWA ELECTRIC AMERICA, INC. Corporate Headquarters 2121 Norman Drive South Waukegan, IL 60085 1-800-YASKAWA http://www.yaskawa.com	DRAWN: J. MATTAS	DATE: 5-21-08	TITLE: G7 DIMENSION DRAWING		
		CHECKED: J. MATTAS	DATE: 7-25-08	FRAME SIZE 14 NEMA TYPE 1/IP20 ENCLOSURE G7U4185, 4220		
		TECH: J. CAIRO	DATE: 8-1-08	SIZE A	REVISION R00	PAGE 2 of 3
		APPROVED: T. SASADA	DATE: 8-8-08	DRAWING #: DD.G7.FR14.N1.01		
UNITS: IN[mm]	SCALE: BY VIEW	ORIGINAL DESIGN: -	DATE: -			


MINIMUM INSTALLATION CLEARANCES (SCALE 1:20)



PANEL CUTOUT FOR EXTERNAL HEATSINK MOUNTING CONFIGURATION (SCALE 1:20)



FOR ADDITIONAL DETAILS AND SPECIFICATIONS, CONSULT MANUAL

TOLERANCES/REFERENCES: - - - - - -	 YASKAWA <i>A World of Automation Solutions™</i> YASKAWA ELECTRIC AMERICA, INC. Corporate Headquarters 2121 Norman Drive South Waukegan, IL 60085 1-800-YASKAWA http://www.yaskawa.com	DRAWN: J. MATTAS	DATE 5-21-08	TITLE: G7 DIMENSION DRAWING		
		CHECKED: J. MATTAS	DATE 7-25-08	FRAME SIZE 14		
		TECH: J. CAIRO	DATE 8-1-08	NEMA TYPE 1/IP20 ENCLOSURE		
		APPROVED: T. SASADA	DATE 8-8-08	G7U4185, 4220		
UNITS: IN[mm]	SCALE: BY VIEW	ORIGINAL DESIGN: -	DATE -	SIZE A	REVISION R00	PAGE 3 of 3
				DRAWING #: DD.G7.FR14.N1.01		